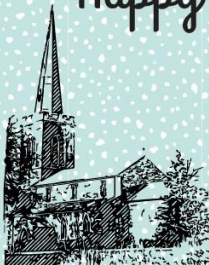


Happy New Year!

January 2026



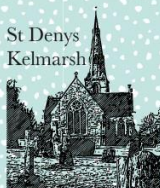
All Saints, Naseby



All Saints, Clipston



St Michael's Haselbech



St Denys
Kelmarsh

There are far better things ahead

The Magazine

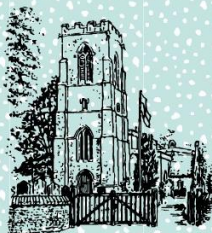
...than we leave behind
C.S. Lewis



Welford
Congregational Chapel



St Helen's Sibbertoft



St Mary The Virgin, Welford



St Nicholas' Marston Trussell

News & Views

Haselbech, Kelmarsh, Marston Trussell,
Naseby, Welford, Sibbertoft & Clipston

DIOCESE OF PETERBOROUGH

United Benefice of Clipston, Haselbech, Kelmarsh, Marston Trussell, Naseby, Sibberton and Welford

| | | |
|-------------------------|--|--|
| Rector | Rev. Tom Grant, The Rectory, Church Lane Clipston LE16 9RW Tom@nasebygroup.org | 07869 345780 |
| Assistant Priest | Rev. Lesley Tomalin Lesley@nasebygroup.org | 07943 702865 |
| Readers | Kairen Ball, 11 Salford Close, Welford Gordon Temple 14 The Leys, Welford Valerie Carpenter, The Covers, Harborough Road Bob Tomalin, Bob@nasebygroup.org | 575331 07990887635 525120 07341 301754 |

| | | |
|-----------------|--|--------|
| Magazine | Julian Howell-Jones, 83 West Street, Welford | 575757 |
|-----------------|--|--------|

St. Mary the Virgin, Welford

| | | |
|----------------|---|---------------|
| Churchwarden | Gordon Ball, 11 Salford Close | 575331 |
| Treasurer | Julie Newman, 30 Wakefield Drive, Welford | 575335 |
| Secretary | Judith Chadwick, Mayfield House, Guilsborough | 07790 906417 |
| Organist | Alan Barraclough, 38 West End, Welford | 575269 |
| Tower Captain | Kelvin Broad, 3 Newlands Road, Welford | 575683 |
| Mothers' Union | Anne Wing, 8 Millers Road, Welford | 571063 |

St. Helen, Sibberton

| | | |
|--------------|---|--------|
| Churchwarden | Toby Jackson, Wry Furlong, Welford Rd, Sibberton | 881091 |
| Treasurer | Lesley Hartshorne, Roserie Cottage, Westhorpe, Sibberton | 880112 |
| Secretary | Viv Arrowsmith, 5 Beeches Close, Sibberton | 880988 |

St. Nicholas, Marston Trussell

| | | |
|--------------|---|--------|
| Churchwarden | | |
| Treasurer | Chris Oatway, 9 Main Street, Marston Trussell | 289516 |

All Saints Clipston

| | | |
|--------------------|--|---------------|
| Churchwarden | Steve Carpenter, The Covers, Harborough Rd | 525120 |
| Treasurer/Organist | Julie Connell, The Wooden Owl, 10a The Green | 525336 |

St Michael's, Haselbech

| | | |
|---------------|---|--------------|
| Churchwardens | Tess Le Sueur, Haselbech | 01604686266 |
| | Michelle Jeffrey | 07785 575169 |
| Treasurer | Michael Hopkins Orton House, Welford Road, Naseby | 01604740309 |

St. Deny's Kelmarsh

| | | |
|--------------|--|-------------|
| Churchwarden | Bob Swinfen Lyndale Rectory Farm, Kelmarsh | 01604686676 |
| Treasurer | Gina Hankins Scotland Wood Farm, Kelmarsh | 01604686216 |

All Saints, Naseby

| | | |
|--------------|---------------------------------------|-------------|
| Churchwarden | Margaret Diack 11 Hall Close, Naseby | 01604743820 |
| Treasurer | Maurice Cave 84 Church Street, Naseby | 01604740388 |

Welford Congregational Chapel

| | | |
|-----------------------------|---|---------------|
| Minister | Rev. Tony Avery | 07850 052541 |
| Treasurer /Secretary | Denise Bolton, Copper Bottom, Northampton Road, | 575746 |

Dear Friends,

Embracing a New Thing in 2026

"See, I am doing a new thing! Now it springs up; do you not perceive it? I am making a way in the wilderness and streams in the desert."— Isaiah 43:19

As we enter a new year, this verse reminds us that God is always at work, bringing hope and renewal even in the driest places. Life can sometimes feel like a wilderness—uncertain and challenging— but God promises streams of refreshment and new beginnings for all who seek Him.

Fresh Beginnings

January often inspires us to make positive changes— eat better, exercise more, try something new. These are great goals, and alongside them we can discover deeper renewal through God's Spirit at work in us. This year, our churches are embracing that promise of renewal in practical and exciting ways.

Pizza and Praise in Clipston

We're thrilled to launch a 4PM service in Clipston on 25 th January at Clipston Village Hall — a gathering for all ages with live worship music and pizza. It's a space to explore faith at your own pace, whether you're deepening your walk with God or simply curious. And in February, we'll begin a Messy Church-style 4PM service in partnership with the local Methodist chapel— another opportunity to connect, create, and celebrate together.

Benefice Service at Haselbech

On Wednesday, 7th January at 11:00 am, join us at Haselbech Church for a special Benefice Service of Holy Communion— a time to recommit ourselves to God and to one another for the year ahead.

Join a Stream

Our vision is simple: to be a refreshing presence in our communities. Just as streams bring life as they meander through the countryside, we want our services and activities to bring hope, joy, and faith, as they meander and travel through our villages. Why not join a stream (see back page for times and locations) and let's travel together, offering support and encouragement to each other as we go. Everyone is welcome— come as you are and be part of what God is doing.

Blessings,
Rev'd Tom

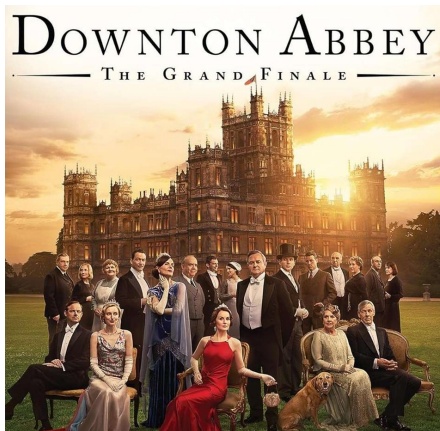
Plough Sunday

is an English celebration held on the day before Plough Monday, the traditional start of the agricultural year.

Plough Sunday celebrations often involve bringing ploughshare into a church with prayers for the blessing of the land. It is traditionally held on the Sunday after Epiphany. Although the nature of farming has changed over the centuries, Plough Sunday is seen as a way of generally celebrating farming and the work of farmers. In the Church of England there is a suggested prayer for the "Blessing of the Plough", for the "Blessing of Seed" and passages of Scripture related to the agricultural theme.

As well as a ploughshare, in some rural areas, local farmers attend the service with their tractors - both new and old. Sometimes, services may be accompanied by other traditions such as Morris Dancing. Historically, villagers would walk through their village collecting alms before gathering at the church for the Blessing of the Plough.

WELFORD



CINEMA

Saturday January 3rd 7.30pm Village Hall

Doors 7.00pm

£7 Cash or Card

CHAPEL COMMENT



The weeks are moving forward,
As every year they must,
And many resolutions lie
Forgotten in the dust.
But as we seek the road ahead, Lord, show us You
are near,
To light the way and smooth the path And wipe away each
tear.

The snowdrops peeping through the earth Remind us life
goes on,
And we can find new hope and strength When doubt and fear
are gone.
Now as we watch the seasons change, Lord, teach us how to
live,
And how to share the joy of life
And all the gifts You give.

Iris Hesselden.

DIARY DATE

Friday 6th March 2026 – World Day of Prayer

We welcome you to join us in this service which encircles the globe in a wave of prayer, being held in Welford Congregational Chapel at 2pm. This years' service has been prepared by Christian women from Nigeria, who share their stories and is entitled *ōI will give you rest, come.ō* For more details or to take part, please contact Rachael Heard on 07808 656831 email rheard@live.co.uk or more information on the World Day of Prayer can be found on the website www.wwdp.org.uk

Good Neighbours – January 2026!

Happy New Year to all

We hope you all had a good Christmas. Thanks to all who supported our

Christmas Coffee Morning in December. It was lovely to see so many people.

Special thanks to those who helped raise over £200 in Betty's hamper raffle for prostate cancer. Congratulations to the two main winners Susie Bevin and Jill Coulson.

The January Good Neighbours Coffee Morning will be on Tuesday January 6th from 10.00-12.00 in Welford Village Hall. £1.50 for coffee/tea and biscuits!

Come and catch up with friends in the warmth of the village hall.

Take away a book (£1) or jigsaw (£2) to settle down with over the next month.

All welcome.

Many thanks to The Team for all your help last year - Sue Lees, Denise

Cattell, Sandra Wright and Jean Baker.

PSALMS AND READINGS – January

Sunday 4th Epiphany

Psalm 8

First Isaiah 60, 1 to 6

Second Ephesians 3, 1 to 12

Gospel Matthew 2, 1 to 12

Sunday 11th Baptism of Christ

Psalm 18

First Isaiah 42, 1 to 9

Second Acts 10, 34 to 43

Gospel Matthew 3, 13 to end

Sunday 18th—2nd of Epiphany

Psalm 67

First Isaiah 49, 1 to 7

Second 1 Corinthians 1, 1 to 9

Gospel John 1, 29 to 42

Sunday 25th—3rd of Epiphany

Psalm 100

First Isaiah 9, 1 to 4

Second 1 Corinthians 1, 10 to 18

Gospel Matthew 4, 12 to 23

SIBBERTOFT

| | Lesson Reader | Intercessions | Sidesman |
|------|--------------------------------------|----------------------|------------------|
| 11/1 | OT Cynthia Bailey | Caroline Jackson | Caroline Jackson |
| | NT Viv Arrowsmith | | |
| | Eucharistic Assistant Viv Arrowsmith | | |

WELFORD

| | Lesson Reader | Intercessions | Sidesman |
|------|---|----------------------|-----------------|
| 4/1 | OT J Newman | S Bevin | J Newman |
| | NT G Newman | | |
| 11/1 | OT C Horner | J Newman | C Horner |
| | NT J Horner | | |
| 25/1 | OT A Barraclough | S Lees | M Broad |
| | NT W Lees | | |
| | Eucharistic Assistant 25/1 Kelvin Broad | | |

WELFORD CONGREGATIONAL CHAPEL **Services at 10.45am**

| | Preacher | Flowers |
|------|-----------------|----------------|
| 4/1 | Rev Tony Avery | Mrs D Avery |
| 11/1 | Steve Morrow | Mrs S Finney |
| 18/1 | Rev Tony Avery | Mrs L Stanley |
| 25/1 | Bill Johnson | Mrs J Herbert |
| 1/2 | Rev Tony Avery | Mrs J Pilmore |

The Magazine.

**If you would like an entry in the February edition of the magazine please
Send copy by 15th January to jules1044@gmail.com**

January Services in the Naseby Group

Morning Stream (10:00am)

| Date | Service | Location |
|--------|-------------------------|-------------------------|
| 4 Jan | Morning Worship with HC | Naseby Methodist Chapel |
| 11 Jan | Morning Worship with HC | Clipston Church |
| 18 Jan | Morning Worship with HC | Sibbertoft Church |
| 25 Jan | Morning Worship with HC | Marston Church |

Fun@4 Stream (4:00pm)

| Date | Service | Location |
|--------|----------------|-----------------------|
| 11 Jan | Café Church | Welford School Hall |
| 25 Jan | Pizza & Praise | Clipston Village Hall |

Evening Stream (6:15pm)

| Date | Service | Location |
|--------|-------------------------------|----------------------|
| 4 Jan | Evening Worship (Evensong) | Welford Village Hall |
| 11 Jan | <i>Taizé Planning meeting</i> | TBC |
| 18 Jan | Evening Worship (Evensong) | Welford Village Hall |
| 25 Jan | Evening Worship with HC | Welford Village Hall |

Agricultural Stream (9:30am)

| Date | Service | Location |
|--------|-----------------------|-----------------|
| 25 Jan | Plough Sunday with HC | Kelmarsh Church |

Midweek Services (11:00am)

| Date | Service | Location |
|-----------------|--|------------------|
| 7 Jan (Wed) | Benefice Holy Communion & New Year's Dedication | Haselbech Church |
| 21 Jan (Wed) | Holy Communion for Residents | Sibbertoft Manor |